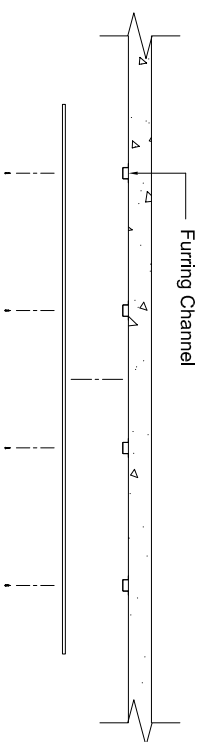
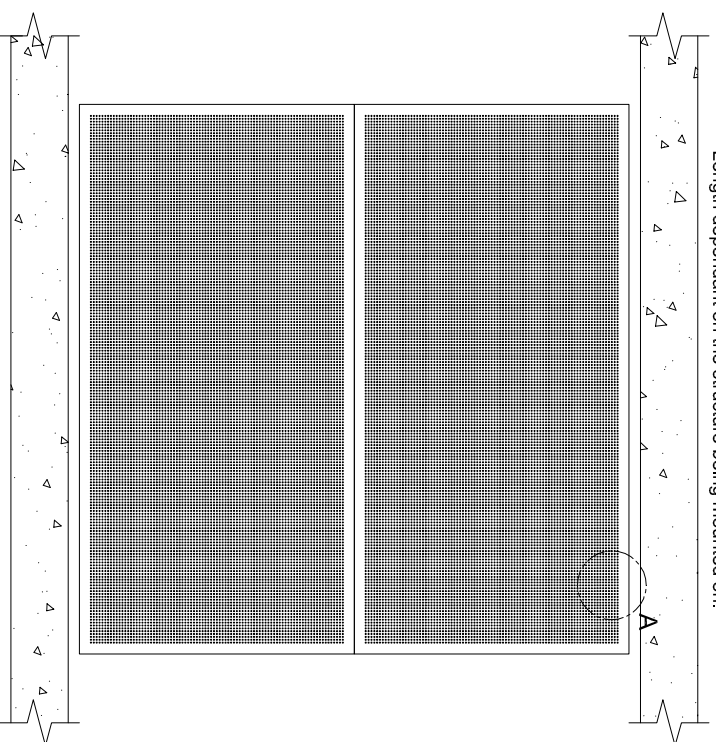


# DecorLux with Face Access Fixing Method

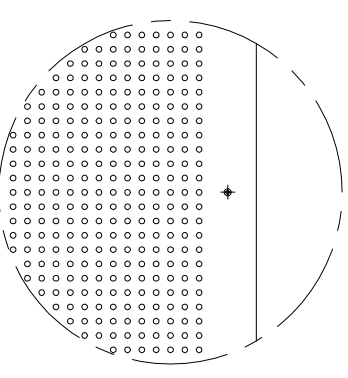
## Wall or Ceiling Application



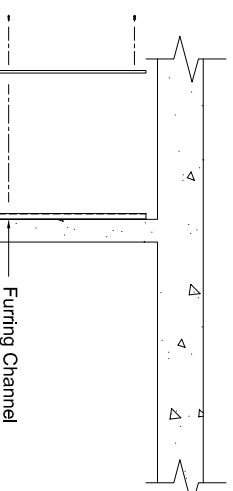
Fixings: Recommend 6G x 32mm CSK (NOT supplied).  
Length dependant on the structure being mounted on.



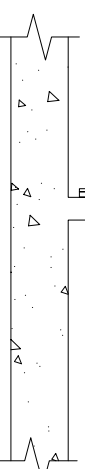
NOTE: FIXED FROM FRONT



Detail A - 1:5



Furring Channel



### Installation Guide

1. Set out the timber studs or steel sections to suit the size of the panels. Recommendation of 400mm centres.
2. Locate & position timber panels, fixing through the face of the panel (on an angle if required) into your framework [Detail A & B].
3. Continue with the remainder of the panels until whole wall or ceiling area is clad.

It is the users responsibility to ensure the use of this document coincides with their own judgment and is appropriate for the application. Decor Systems cannot be held responsible for any consequences arising from the improper use of this manual (whether negligence or otherwise).

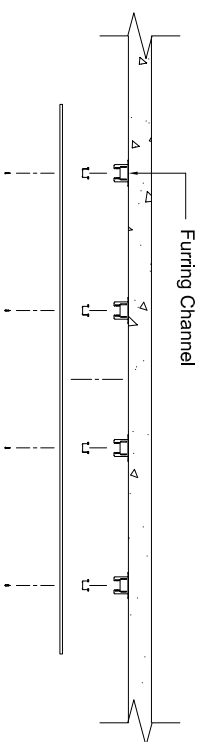
**Disclaimer:**  
All specifications shown in these documents are intended as a guide only & should not be considered as conclusive. Fixing types & sizes used to install these products must be considered in conjunction with site conditions.

THESE DESIGNS, DRAWINGS & SPECIFICATIONS & COPYRIGHT THEREOF ARE THE PROPERTY OF DECOR SYSTEMS AUSTRALIA & MUST NOT BE USED, RETAINED OR COPIED WITHOUT THE WRITTEN AUTHORITY OF DECOR SYSTEMS AUSTRALIA.



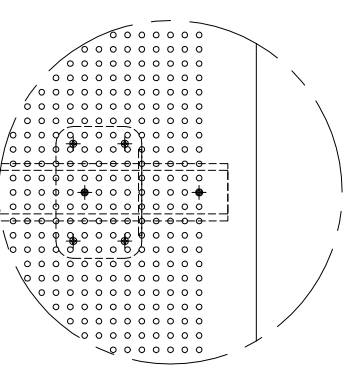
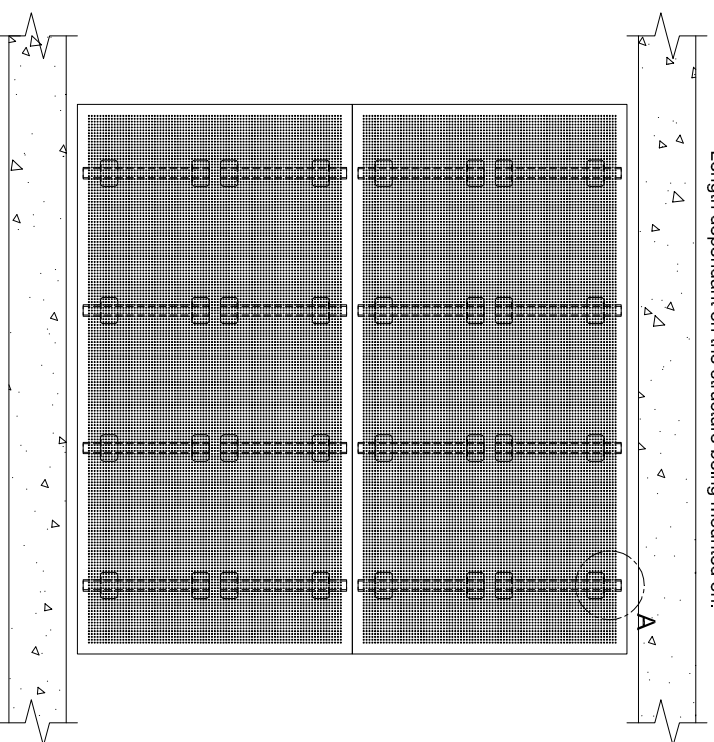
# DecorLux with Rondo Furring Channel Fixing Method

## Ceiling Application Only



NOTE: FIXED FROM FRONT

Fixings: Recommend referring to Rondo fixing kits.  
Length dependant on the structure being mounted on.



Detail A - 1:5

### Installation Guide

1. Set out the Rondo locating brackets to suit the size of the panels. Recommendation of 400mm centres.
2. Fix the Rondo furring channel to the rear of the panels [Detail A]. Ensure that the same centre configuration as the structure mounted Rondo brackets is used.
3. Locate & position panels with structure mounted Rondo brackets. Push panel into position until the furring channels locate the teeth of the locating brackets.
4. Continue with the remainder of the panels until whole ceiling area is clad.

#### Disclaimer:

All specifications shown in these documents are intended as a guide only & should not be considered as conclusive. Fixing types & sizes used to install these products must be considered in conjunction with site conditions.

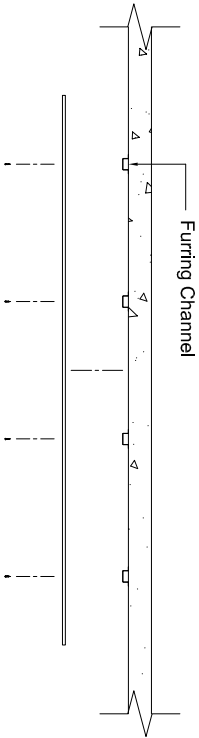
It is the users responsibility to ensure the use of this document coincides with their own judgment and is appropriate for the application. Decor Systems cannot be held responsible for any consequences arising from the improper use of this manual (whether negligence or otherwise).

THESE DESIGNS, DRAWINGS & SPECIFICATIONS & COPYRIGHT THEREOF ARE THE PROPERTY OF DECOR SYSTEMS AUSTRALIA & MUST NOT BE USED, RETAINED OR COPIED WITHOUT THE WRITTEN AUTHORITY OF DECOR SYSTEMS AUSTRALIA.



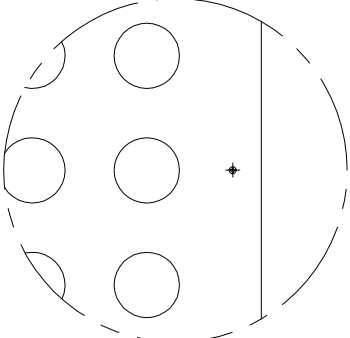
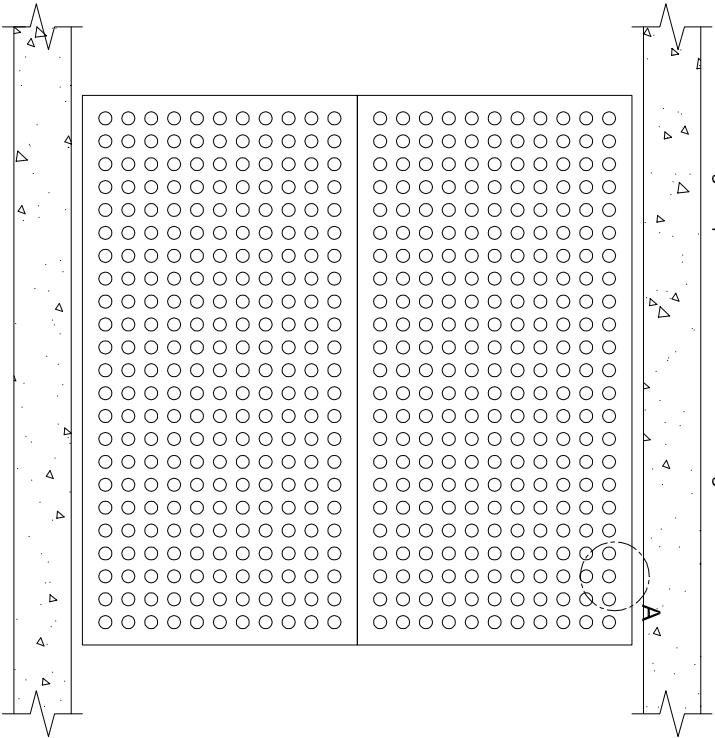
# DecorLuxMax with Face Access Fixing Method

## Wall or Ceiling Application

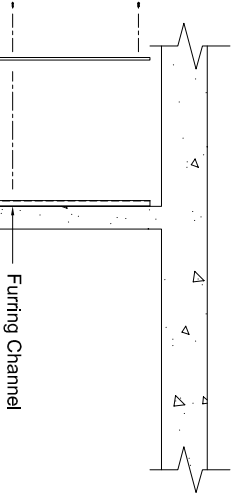


NOTE: FIXED FROM FRONT

Fixings: Recommend 6G x 32mm CSK (NOT supplied).  
Length dependant on the structure being mounted on.



Detail A - 1:5



Furring Channel



### Disclaimer:

All specifications shown in these documents are intended as a guide only & should not be considered as conclusive. Fixing types & sizes used to install these products must be considered in conjunction with site conditions.

It is the users responsibility to ensure the use of this document coincides with their own judgment and is appropriate for the application. Decor Systems cannot be held responsible for any consequences arising from the improper use of this manual (whether negligence or otherwise).

### Installation Guide

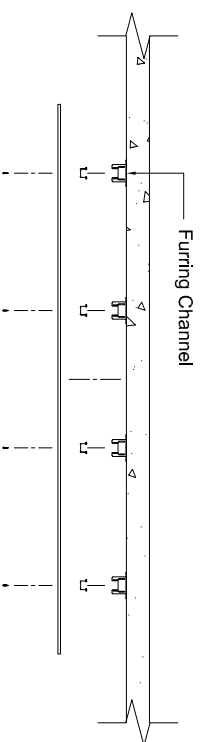
1. Set out the timber studs or steel sections to suit the size of the panels. Recommendation of 400mm centres.
2. Locate & position timber panels, fixing through the face of the panel (on an angle if required) into your framework [Detail A & B].
3. Continue with the remainder of the panels until whole wall or ceiling area is clad.

THESE DESIGNS, DRAWINGS & SPECIFICATIONS & COPYRIGHT THEREOF ARE THE PROPERTY OF DECOR SYSTEMS AUSTRALIA & MUST NOT BE USED, RETAINED OR COPIED WITHOUT THE WRITTEN AUTHORITY OF DECOR SYSTEMS AUSTRALIA.



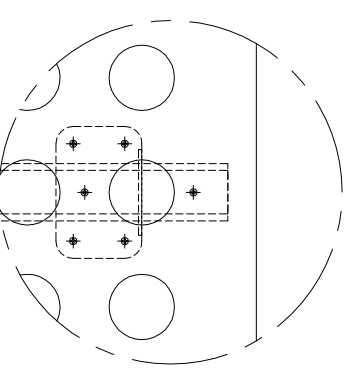
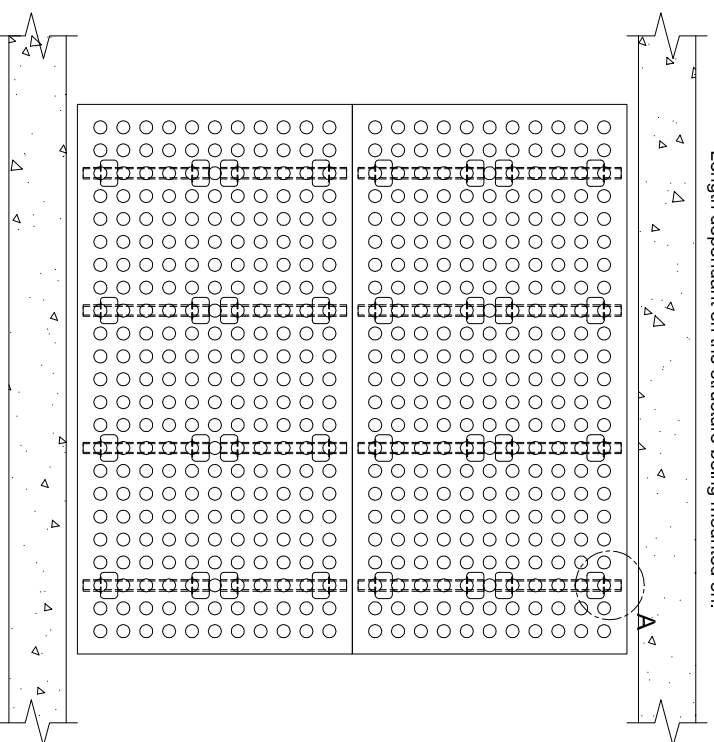
# DecorLuxMax with Rondo Furring Channel Fixing Method

## Ceiling Application Only



NOTE: FIXED FROM FRONT

Fixings: Recommend referring to Rondo fixing kits.  
Length dependant on the structure being mounted on.



Detail A - 1:5

### Installation Guide

1. Set out the Rondo locating brackets to suit the size of the panels. Recommendation of 400mm centres.
2. Fix the Rondo furring channel to the rear of the panels [Detail A]. Ensure that the same centre configuration as the structure mounted Rondo brackets is used.
3. Locate & position panels with structure mounted Rondo brackets. Push panel into position until the furring channels locate the teeth of the locating brackets.
4. Continue with the remainder of the panels until whole ceiling area is clad.

#### Disclaimer:

All specifications shown in these documents are intended as a guide only & should not be considered as conclusive. Fixing types & sizes used to install these products must be considered in conjunction with site conditions.

It is the users responsibility to ensure the use of this document coincides with their own judgment and is appropriate for the application. Decor Systems cannot be held responsible for any consequences arising from the improper use of this manual (whether negligence or otherwise).

THESE DESIGNS, DRAWINGS & SPECIFICATIONS & COPYRIGHT THEREOF ARE THE PROPERTY OF DECOR SYSTEMS AUSTRALIA & MUST NOT BE USED, RETAINED OR COPIED WITHOUT THE WRITTEN AUTHORITY OF DECOR SYSTEMS AUSTRALIA.

